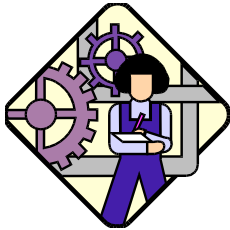


Storybook Gardens Renovation: Role Cards

Decide on the roles that will be played by each member of your group. As a group, ensure that assigned tasks are in line with the interests and abilities individuals in your group!

Structural Engineer



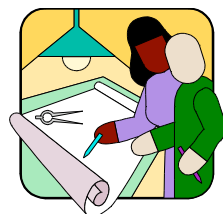
- this person is the construction expert in the group
- coordinates the development of a ride or experience consistent with the group's chosen theme
- develops scale models of concession area, benches, signs
- enlists the assistance of other group members in the building of structures for the proposed amusement area

Artistic Director



- in collaboration with group members, develops thematic elements (theme, music, costumes...)
- encourage participation by all team members in the selection of an appropriate 'theme', 'title', 'slogan'
- leads the team in the development of visual elements to highlight models
- collaborate with Public Relations Specialist in staging the presentation and related advertising campaign

Architect



- prepares technical drawings of the new 'attraction'
- guides the group in the selection and creation of costumes/props appropriate to the task
- researches the materials to be used in development of the attraction to ensure environmental responsibility
- works closely with the Engineer to ensure that scale models match with technical drawings
- ensures that 'universal accessibility' addresses visitors' needs

Public Relations Specialist



- this person is the Communications Expert within the group
- works closely with the Artistic Director in ensuring the completion of the 'story elements' and advertising brochure
- guides the development of a rich proposal/presentation to staff of the City of London and Storybook Gardens
- may choose to use 'slideshow software' as presentation tool
- communicate with team members to ensure an understanding of roles in the presentation
- manages the presentation and related advertising campaign