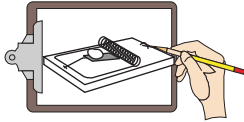


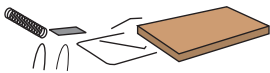
Refer to the reference section of this book (pages R2 -R3) for information on specific details of producing a suitable technical drawing for your solution. As you are developing your ideas and trying to produce a working design you will find that things tend to evolve. Attempting to produce a technical drawing before a prototype of the device has been created is very difficult. This assumes that all of your ideas will work exactly as you expect before they are tested.

Consider the following steps in developing your design:



Refine your design ideas

- ✓ Work through your best design idea producing rough sketches and making decisions about final size and shape.



Select appropriate materials

- ✓ Give consideration to the size, shape, strength and appearance of available materials.
- ✓ If suitable materials are not available, design changes may be necessary.



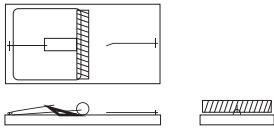
Produce your proto type (build your device)

- ✓ Use your sketches and construct your prototype device.
- ✓ Note any changes at this time.



Test your ideas

- ✓ As you construct your solution evaluate its function and form, refining as necessary.
- ✓ Include new ideas and abandon old ones as you observe the results of your inquiry.



Produce an accurate technical drawing

- ✓ Use appropriate techniques to produce a drawing which could be used to duplicate your solution.
- ✓ This type of design experience may work best when the **drawings are completed at or near the end** of your testing phase. **This process is not linear!**

Drawing Checklist

Details:	Are all details of construction included? Have all lines been drawn with a ruler or compass?	<input type="checkbox"/> <input type="checkbox"/>
Scale:	Has the drawing been produced to an appropriate scale? Has the scale been listed on the drawing?	<input type="checkbox"/> <input type="checkbox"/>
Views:	Does your drawing have a top view? Does your drawing have a front view? Does your drawing have a right side view?	<input type="checkbox"/> <input type="checkbox"/> <input type="checkbox"/>
Dimensions:	Have all the critical measurements been included on the drawing? Are dimensions placed appropriately using proper technique?	<input type="checkbox"/> <input type="checkbox"/>